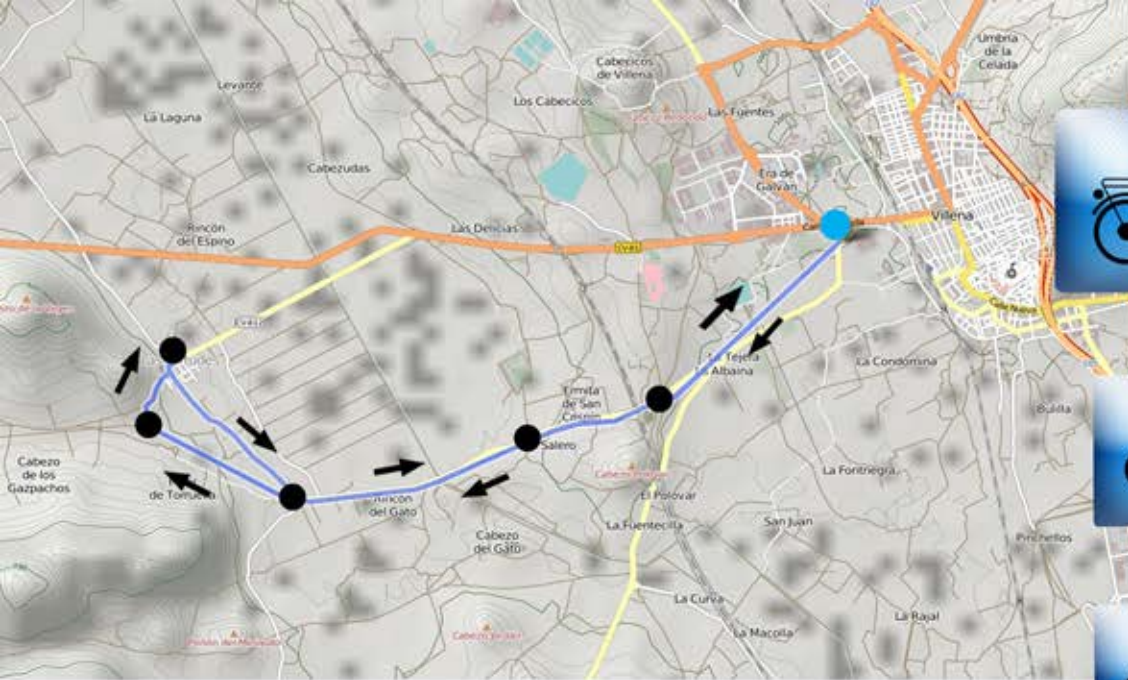




The recent evolution of the world of wine and the fact that the province of Alicante is one of the most important in terms of wine production, leads us to know this world better from one of the most important municipalities within The Route of the Wine of Alicante: Villena.

Once again we take advantage of the fact that the bicycle allows us to travel longer distances and enjoy a pleasant and full of history route.



Distance
12,82Km



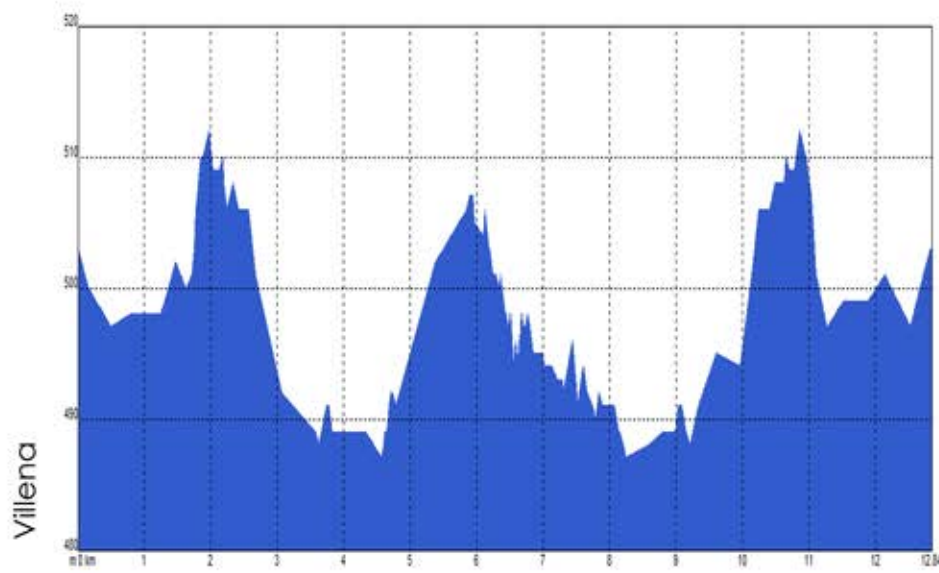
Cumulative
positive
slope
25m



Profile



Route
planner



- Km 0. Villena
- Km 1,80. Hermitage of San Bartolomé
- Km 3,30. Acequia del Rey and los Saleros
- Km 4,60. Bifurcation on the left
- Km 5,90. Apeadero of Las Virtudes
- Km. 6,30. Las Virtudes (Cloister of the Sanctuary and rest area)
- Km. 8,10. Reincorporation to the V.V. Of Chicharra's bike line
- Km 12,82. Villena

